



# Uniform and Appearance

July 2015

Reviewed Annually



**We believe that pupils who show respect for our school uniform deserve respect themselves. We want all our pupils to make a good first impression.**

**Year 11**

## School Uniform: Why?

A simple and clear school uniform policy promotes school safety, improves discipline, and enhances the learning environment. We believe that school uniform helps to forge a single identity for the school and our pupils...like a sports team. By insisting that all pupils dress in the same way we can ensure that bullying incidents relating to a person's ability to afford the latest fashions doesn't happen. We are working very closely with our stockists to ensure that pupils wear authentic items of school clothing within the guidelines in this policy.

If you talk to any recruitment officer they will give the same message they get from their parents and school: ***How you dress and present yourself really matters!***

Good schools prepare their pupils for the world of work by insisting on high standards in dress and appearance. Looking clean, decent and well-groomed influences the way in which you are treated and can give you a head start in life.

Our pupils are frequently complimented on their appearance. Our rules are strongly influenced by the feedback we get from parents and also the views of our pupils. Whilst some pupils would like softer uniform rules, many pupils respect the fact that the uniform does just what it is supposed to - makes us look like a team! The high standards set by parents at home are a strong guide to us and we want to reinforce this at school.

An overwhelming majority of parents want their children to go to school dressed in an appropriate way and they support our emphasis on respect for the dignity of young people. Cardinal Allen greatly values the strong backing we get from parents over uniform matters.

Uniform at Cardinal Allen is **compulsory** and must be worn correctly by all pupils at all times. Every child admitted to the school has been given a place on the clear understanding that parents accept and comply with our policies. Some pupils try to test the edges of what they can get away with, but schools where compliance with uniform regulations is strong are able to discourage this.

***Ensuring your child co-operates with school uniform rules is where you as a parent play a key role in upholding school discipline.***

Such claims as, "All my mates have one... Everybody's wearing them... Teachers don't mind" are almost certainly wrong. If in doubt, check with the school.

Adjustments to uniform are made from time to time. We communicate these to parents well in advance. We are conscious of the financial pressures on families and our uniform requirements are intended to be sensitive to these. There are rare occasions, where for cultural or ethnic reasons, parents have requested that we soften our Uniform and Appearance Policy. Each case will be dealt with on its merits.

**Hair Colour:** our expectation is that all pupils will attend school with their hair in its natural colour. If a pupil fails to comply with this aspect of school policy then he/she may be asked to return home until the matter is addressed.

**Clothing etc. which will be confiscated immediately:** Any garment with offensive slogans or language; "Hoodies" (sports tops which are not coats but with hoods); inappropriate earrings (i.e. 2nd, 3rd pair etc.) or piercings. Other garments inappropriate for school wear.

**Non-uniform days:** Normal lessons take place on these days. The only difference is that children can choose, within reason, what they want to wear. Clear guidelines are issued to all pupils before each non-uniform day about appropriate dress. Make-up, additional jewellery, exposed midriffs, cropped or low cut tops, short skirts and items with potentially offensive wording and logos are **not permitted. Children who do not comply will miss out on the fun!**

**School Trips:** Guidelines are issued before each event but normally exactly the same rules apply as for non-uniform days.

**School Shoes:** When a pupil arrives at school with inappropriate footwear, he / she will be provided with a pair of plain, black pumps for the day.

***If you have a query or a comment please call the school on 01253 872659***

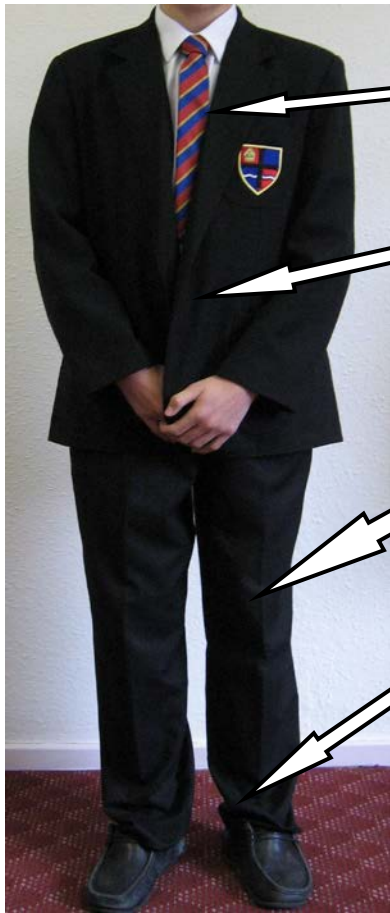
Examples of shoes / boots that are <b>not allowed</b> :					
Boots	Ballet style	Sling backs	Converse	Skater shoes	Training shoes
					

Girls		Boys
	<b>Blazer</b>	Black with school badge
	<b>Tie</b>	Year 11 School tie
Charcoal grey striped blouse from school stockists	<b>Shirt</b>	White with shirt collar
Black, V-neck sweater (no badge)	<b>Sweater</b>	
Full length grey trousers incorporating the Cardinal Allen badge as supplied by the official school stockists.	<b>Trousers</b>	Black, formal type with normal leg width in suiting material, not in cotton, etc. Casual trousers are not acceptable.
Mid-grey, A-line style, with the Cardinal Allen badge on the hem of the left side of the skirt. The length of the skirt should respect normal standards of modesty bearing in mind the practical nature of work in a mixed high school <b>- a skirt with the hem above the knee is unacceptable.</b>	<b>Skirt</b>	
White knee-length, or black tights of 30 or 60 denier.	<b>Socks</b>	Plain and dark coloured
A traditional shoe, in <b>plain BLACK polished leather</b> with <b>black laces and dark thin soles</b> . <b>TRAINERS OR BOOTS ARE NOT ACCEPTABLE</b> . Parents are asked to ensure that only shoes that allow freedom, support and safety are worn for school. For this reason sling-backs or ballet style shoes are not acceptable and heels should be <b>NO MORE THAN 2.5CM (1")</b> .	<b>Shoes</b>	A traditional shoe, in <b>plain BLACK polished leather</b> with <b>black laces and dark thin soles</b> . <b>TRAINERS OR BOOTS ARE NOT ACCEPTABLE</b>
A reasonable, <b>plain style</b> in a pupil's <b>own single natural</b> colour, not patterned, stepped, shaved, spiked or beaded. Hair which is too long, e.g. in the eyes, is not permitted. Please see facing page for specific details and sanctions regarding hair colour.	<b>Hair</b>	A reasonable, <b>plain style</b> in a pupil's <b>own single natural colour</b> , not patterned, stepped or shaved, and cut <b>no shorter than a number 2</b> . Hair which is too long - either in the eyes or over collar length, is not permitted. Hair must not be spiked up. Pupils must be clean shaven.
No jewellery may be worn except for a watch and one plain gold or silver stud in each ear lobe. Facial piercings are not allowed – <b>PUPILS WILL NOT BE ALLOWED TO MASK SUCH PIERCINGS WITH A PLASTER.</b>	<b>Jewellery</b>	No jewellery may be worn except for a watch. Earrings are not allowed. Facial piercings are not allowed – <b>PUPILS WILL NOT BE ALLOWED TO MASK SUCH PIERCINGS WITH A PLASTER.</b>
Make-up, fake tan, false nails and nail varnish are not allowed.	<b>Make-up</b>	Make-up, fake tan, false nails and nail varnish are not allowed.
School tracksuit top, red t-shirt with school emblem, black self-stripe football shorts, black (pleated) gym skirt (optional), black tracksuit bottoms (plain), white trainers, red football socks. <b>Aerosols must not be brought into school.</b>	<b>PE Kit</b>	<i>New design</i> red rugby shirt with black reversible, red t-shirt with school emblem, black shorts, red socks and suitable trainer shoes ( <b>NOT</b> boot-style). Football boots and <u>shinpads</u> . <b>Aerosols must not be brought into school.</b>

<b>School Bag</b>	A suitable waterproof school bag to protect expensive books provided by the school. The bag should be of a sensible medium size and not an extremely large sports hold-all or fashionable handbag.
<b>Outdoor Coat</b>	Plain in style. Denim, leather, tracksuit tops and suede coats are <b>not allowed</b> and <b>fashion jackets are obviously not in keeping with school uniform</b> . For wet weather, a reasonable length is wise.
<b>Apron</b>	A bib-type apron for Technology, and to be worn clean for Food Technology
<b>Cycling</b>	For safety we recommend the wearing of coloured or reflective bands and cycling helmet.
<b>Personal cleanliness and tidiness</b>	A high standard of cleanliness is expected. It is the responsibility of each pupil to ensure that his / her uniform and personal appearance is neat and tidy at all times.



# How we want you to dress:



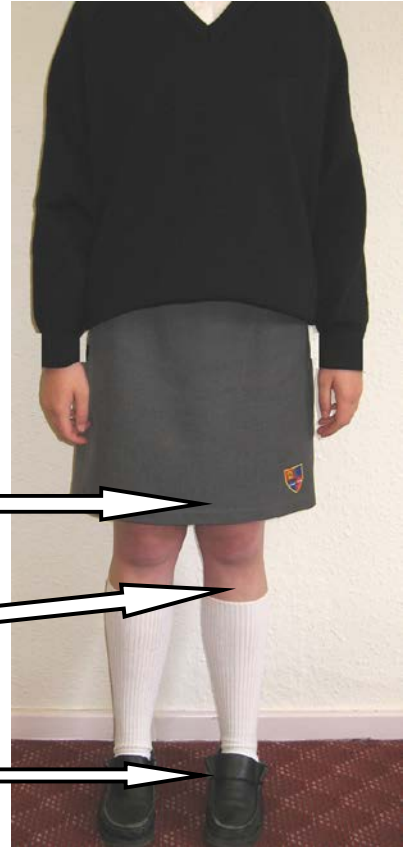
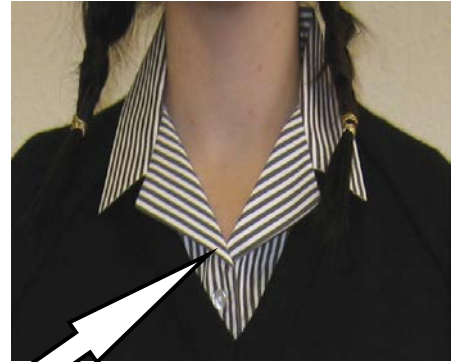
Tie up to collar and length to tummy

Shirt tucked in

Black normal leg width not cotton

Black lace-up shoes with laces tied

Charcoal grey striped blouse only to be purchased from school stockists



Skirt worn long to the knee

Socks pulled up just below knee

Sensible black shoes, 1" heel maximum, no soft soled shoes

If you are in any doubt about any aspect of this policy, please contact the school for clarification so that together we can avoid any problems.

**Cardinal Allen Catholic High School**  
**Melbourne Avenue, Fleetwood. FY7 8AY**  
**[www.cardinalallen.co.uk](http://www.cardinalallen.co.uk)**      **[head@cardinalallen.co.uk](mailto:head@cardinalallen.co.uk)**      **01253 872659**  
**@CardinalAllen**